

E-SHIP



E-SHIP – Shipping Manifest System

Using E-Ship, built inside Microsoft® Dynamics™ NAV, you can reduce cost while increasing both efficiency and accuracy.

Key Benefits:

- Capture package level detail using Pack Line Scanning.
- Increase shipping accuracy by scanning items and comparing them to the sales order or picking document.
- Capture serial numbers and lot numbers at packing time.
- Quote freight rates while taking an order.
- Automatically post freight charges to the sales order.
- Automatically create packing lists by package and order.
- Print certified carrier labels, custom labels, and UCC128 labels while handling the package.
- Upload Electronic Manifests.
- Automatically send a detailed E-Mail with tracking numbers and package contents to the customer at time of shipment.
- Track packages and shipments from within the business system.
- Reconcile freight invoices.
- Integrate with EDI and Bill of Lading to generate Advanced Shipment Notices (ASN).

Built Inside Microsoft Dynamics NAV

By having E-Ship embedded in NAV, the user experiences unprecedented functionality and access to data. E-ship is available to plan and execute shipping from the time of sales order through shipping manifest.

Detailed information in this segment of the system can be accessed via the standard drill down capability found throughout Dynamics NAV. Changes made to a customer's address are made on the system's customer card where they will be available to all other parts of the system as well.

Shipping Accuracy

Pack Line Scanning can drive your shipping accuracy to new levels. E-Ship users will tell you that their accuracy approaches 100%. Not only do they know that they shipped the correct items in multiple packages, but they know which items are in each package and the tracking number of the package. In addition, the weight of each package substantiates that the quantity the customer ordered is actually shipped.

E-Ship uses the Dynamics NAV unit of measure functionality to convert and pack multiple units of measure for a single item. Typically this is utilized when a single item contains different barcodes based on its unit of measure.

When packing of a sales order is completed, the user is notified if the packed quantity is not equal to the quantity that was to be shipped. For backordered shipments, E-Ship has the ability to automatically update the sales order with the packed quantity.

An added benefit of package level detail is the ability to print a summarized packing list for the last package in a group, which shows the contents of each package and the associated tracking number. This information can also be automatically sent via e-mail to the customer with CC and BCC addresses included as needed. This is extremely helpful when drop shipping product to a client's end customer.

Shipping Charges

Charges are automatically posted to the sales order and may be marked up by a percentage or dollar amount per package as a handling charge.

COD Shipments

COD charges are triggered by the payment terms of the sales order and may be attached to each package or the last package in the shipment.

LTL and Package Carriers

E-Ship is made up of various software modules that are selected based on specific requirements. This means that E-Ship supports the popular package carriers such as UPS, FedEx, and USPS, while providing companies with the ability to subscribe to SMC3 for LTL rates, or manually create and manage rate tables.

EDI and ASN Integration

Because E-Ship captures Package Level Detail, there is no need to re-key data or transfer information from system to system to prepare and send the Advanced Shipment Notice. ASNs can be automatically sent when the sales order is closed, or in the case of LTL shipments, when the Bill of Lading is closed.

Multi-Point Shipping Requirements

Today many companies operate multiple warehouses and shipping points, but have a strong need to operate from a consolidated ERP system. If your company has these types of requirements, E-Ship and Dynamics NAV offer an excellent solution. Using a centralized database, with a Citrix server and terminals deployed in each warehouse, it is just as easy to ship a single sales order from California as it is from New York. In fact, E-Ship can ship that single sales order from multiple warehouses with separate or consolidated invoicing.

International Shipping

As the world becomes a smaller place it becomes more and more necessary to ship internationally. E-Ship handles international shipping by producing the following documents:

- Electronic Export Information (EEI), formerly the Shipper's Export Declaration (SED), now required by The US Census Bureau.
- NAFTA Documents
- Certificate of Origin
- Commercial Invoice

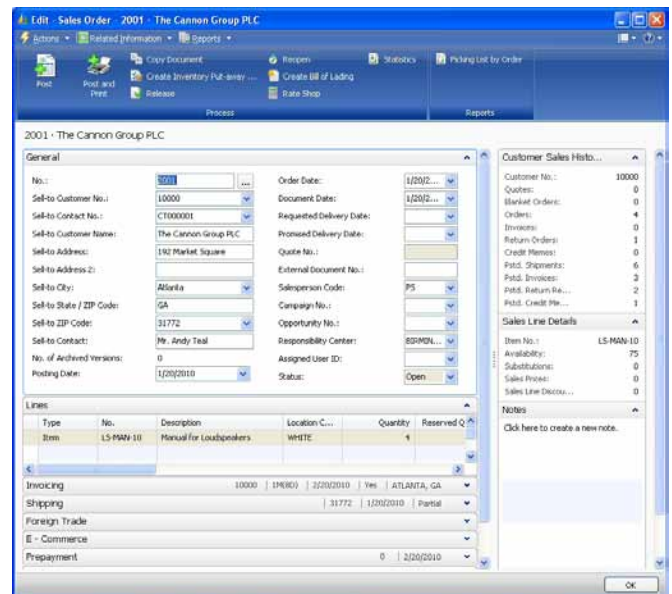
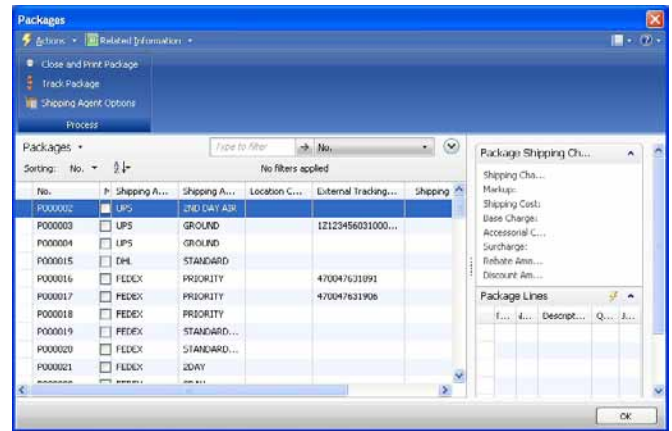
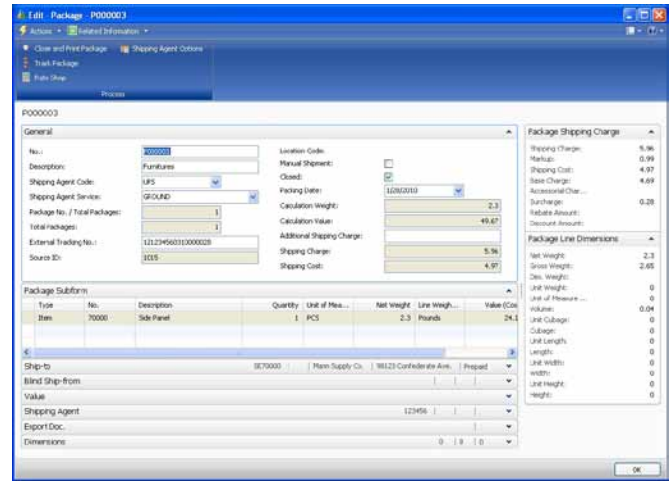
E-Ship also interfaces with the US government's AESDirect Web Site for electronic transmission of the EEI and associated ITN number(s) on international shipments originated in the US.

Address Validation

Address Validation enables the user to check addresses in batch or single format, in order to avoid carrier charges for inaccuracies, invalid addresses, or using the incorrect category of business or residential address.

E-Ship Package Detail

Below you can see a sales order being shipped by UPS in two packages. Notice shipping charges on the sales order.



Available E-Ship Modules

Packing – captures package level detail using a wedge scanner attached to a computer workstation. This unique packing operation allows the user to execute the entire packing and shipping operation with the scanner.

- **Standard Pack** – provides the ability to easily pack many standard packages, such as cases, without scanning and weighing each package. This feature is often used to meet package shipping and labeling retail compliance requirements.
- **Fast Pack** – provides an alternative to the scanning interface by allowing a shipper to choose the item being packed from a list.
- **Export Documentation** – for U.S.-Originating Shipments, contains Electronic Export Information (EEI), NAFTA, U.S. Certificate of Origin, and commercial invoices. Certificate of Origin export documents can be created independently of packages.

Scales Interface – interfaces with various electronic scales during the packing process. Check the web site, www.lanhamassoc.com for a list of recommended scales.

UPS Manifest – uses UPSlink functionality for shipments originating in the U.S., to ship domestically and internationally. Includes the latest functionality for handling Hazardous Materials as well as efficient container handling for international shipments (World-Ease).

FedEx Manifest – uses the FedEx API for shipments originating in the U.S., to ship domestically and internationally.

USPS Manifest – enables a USPS API for shipments originating in the U.S., to ship domestically and internationally.

LTL Interface – supports shipping via Less Than Truckload (LTL) carriers and contains a data import for CzarLite rates from SMC3. Rates are obtained separately directly from SMC3.

Bill Of Lading/ASN – provides shipment planning, rating, and printed Bills of Lading (BOL). The Bill of Lading is also used to consolidate information for the Advanced Shipment Notice (ASN) for EDI.

Label Formatter – provides the ability to format customized labels, and assign them to shipping agents, customers, or ship-to addresses.

AES – is a module that accesses the U.S. Census Bureau's free web site, AESDirect, to facilitate the electronic filing of EEI (Electronic Export Information). EEIs are now required for international shipments originating in the U.S. if the commodity value is \$2,500.00 or greater.

Lanham's AES module simplifies the process by AESDirect Shipments and receive AES reference numbers (ITN numbers). The ITN numbers can then be included in shipping labels and manifests for package carriers. The AESDirect Shipment can be created manually or from the Sales Order, Purchase Order or Transfer Order form. The interface uses HTML documents. Documentation for AESDirect fields and other requirements can be found at www.aesdirect.gov.

Rate Shopping – provides the ability to estimate and quote shipping rates at the sales order or Bill of Lading level for package and LTL carriers.

Freight Invoice Reconciliation – can be used to electronically or manually compare shipping charges to freight invoices. This module comes with an import for the UPS electronic invoice format, and is typically used to reduce surcharges due to invalid shipping criteria such as addresses, accessorial charges, etc.

Label Formatter Extended Features – adds the ability to do 2D barcodes and encode RFID tags.

E-Mail – provides the ability to map customized e-mail formats and assign them to customers or ship-to addresses. Allows you to send shipping information and package details via e-mail.

Software Requirements

- NAV OCX support required if utilizing MAPI e-mail interface in pre NAV 2009 environment.
- Dynamics NAV client running under Windows 2000 or newer.
- Internet connection required on all shipping stations.

Hardware Requirements

- Symbol model LS4208 or equivalent.
- Electronic Scales using RS232 interface, Mettler Toledo PS60 or similar (Check currently supported models at www.lanhamassoc.com).
- Eltron or Zebra barcode printer capable of printing at least 4" X 6" labels.
- Computer workstation, 1 GHZ processor, RS232 serial port, parallel printer port, and hard-wired network connection.

Related Fact Sheets

To learn more details about the suite of products available from Lanham Associates, you may reference the following fact sheets:

- Automotive, Consumer Packaged Goods, Electronics, and Sporting Goods ACE – Advanced Commerce ERP
- EDI
- E-Receive
- Address Validation
- Advanced Forecasting & Procurement – AFP for Distribution
- AFP for Manufacturing
- Wholesale Distribution
- ADCS Warehousing
- Outbound Warehouse Request
- Credit Card Processing
- History & Security Management



ACT Dynamics Software Services

Toll Free: (866) 366-0366

Email: sales@actdynamics.com

www.actdynamics.com

About the Developer

Lanham Associates® began its relationship with Navision Software in 1997 by creating the product's first distribution functionality, Advanced Distribution. A Gold-Certified Microsoft Dynamics ISV (Independent Software Vendor), Lanham Associates has been creating complementary supply chain planning and execution products inside Dynamics NAV ever since.

Current products include ACE – Advanced Commerce ERP – for Automotive, CPG, Electronics, and Sporting Goods; EDI; E-Ship; E-Receive; Address Validation; AFP – Advanced Forecasting and Procurement; ADCS Warehousing; Outbound Warehouse Request; Credit Card Processing; and History & Security Management.

Lanham also provides Absolute Value, a world class, formula-based forecasting and multi-site replenishment solution for distributors, allowing them to increase profits while concurrently improving customer satisfaction with unprecedented visibility. The product is available in a SaaS or on-premise format, and can be used with any Microsoft® Dynamics™ or independent ERP system.

Lanham Associates maintains high standards for product excellence, and has been the recipient of both the President's Club and Inner Circle Awards many times since being affiliated with Microsoft.

Contact Information

For more information contact your local Lanham reseller or contact us at:

Lanham Associates, Headquarters

1 Meca Way
Norcross, GA 30093 USA
Voice: +1-678-379-4200, ext 105
E-Mail: LAInfo@anhamassoc.com

Lanham Associates, EMEA

Bedrijvenpark Twente 305
7602 KL Almelo, Netherlands
Voice: +31 (0)10 7994145
E-Mail: LAInfo@anhamassoc.com

More information is available on this and other products at www.lanhamassoc.com or www.absolutevalue-us.com.